

“Our House” for Disabled Children and Their Families



of Disabled Kids!



“Our House” based at **Charles Annexe, Toutley Road, Wokingham** was opened in May by the Earl and Countess of Wessex as a dedicated centre for disabled children and their families.

The official opening of the centre was one of many visits in Berkshire to mark the Earl’s 50th birthday.

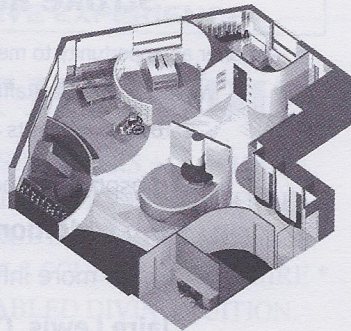
The Royal couple were given a tour of the centre which features sensory room, soft play area, computer pod, an arts and crafts zone, a stage area and a chill-out room especially for disabled teenagers, as well as a parents’ room and a bathroom for the disabled.

The centre was the vision of the parents who set up the charity - **Building for the Future**. After a fundraising campaign from local businesses, the charity enlisted the skills of the design team at **Koubou** to make their dreams become reality. This Royal Opening was a special highlight for Crowthorne based **Koubou Interiors** team.

The building had been previously used as a commercial unit and remained unoccupied for some time. The challenge for the **Koubou** designers was to create a centre with zoned areas to enable the children of various ages and disabilities to use the facilities and have somewhere they could call their own. It was also important for the parents to be able to use it as a community centre to support each other.

Beckie Gibbons, one of **Koubou Interiors** design team, explained the thoughts behind the design process,

“Understanding how the centre was to be used and the special needs of the children was crucial to our designs. Our aim was to create a flow throughout the building and we did this by creating curved walls to provide the various zones. Each zone had a different theme and the use of colour and customised images created a fun environment. Hardwearing surfaces on the floors and the walls were used to withstand the use of wheelchairs and the daily wear and tear of a children’s play area”.



Right: Isometric View

Building for the Future contact: www.bfff.org.uk 01189 706704